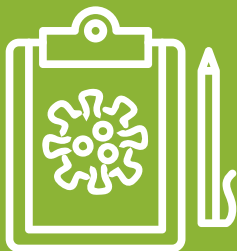


Expanded criteria for COVID-19 testing in the Cape Metro



September 2020



**Western Cape
Government**



With increased testing capacity, we are able to expand testing to include more people, especially those who would benefit most. **In addition to health workers and those most at risk of severe COVID-19, more groups of people can now be tested.**

All people accessing a public sector health facility will be screened (asked questions) but **ONLY** those who fall into one of these categories will be tested:



People admitted to hospital who have coronavirus symptoms



People over 55 years who have coronavirus symptoms



People of any age who have coronavirus symptoms and one or more of these conditions:

- Diabetes
- Hypertension or heart disease on treatment
- Cancer on treatment
- TB on treatment
- HIV with poor adherence to ARVs
- Chronic lung disease on treatment (e.g. asthma, emphysema, chronic bronchitis)



People who live in a care or old-age home and have coronavirus symptoms



Health workers who:

- **Have coronavirus symptoms or**
- **Are in quarantine after an exposure and are asymptomatic at day 7 but need to return to work**



NEW

People awaiting surgery, even if they have no symptoms



NEW

Essential public sector workers (SAPS, prison workers, firefighters, municipal utilities, Eskom) with coronavirus symptoms



NEW

Workers at workplaces who have coronavirus symptoms



NEW

Learners and staff attending school who have coronavirus symptoms

Other groups that will be tested are:



NEW

Inmates at correctional facilities who have coronavirus symptoms



NEW

People who died of natural deaths at home who had coronavirus symptoms

STAY SAFE

**MOVE
FORWARD**