

RACE DAY ROLL OUT

In an athlete satisfaction survey, Mossel Bay was rated the 3rd worldwide as host venue for the IRONMAN 70.3 – this, in its maiden year of hosting such a prestigious event. This is a huge compliment as the top 2 positions were taken by Chattanooga (USA) and Port Macquarie (Australia), have been hosting the event for several years.

"We thank Mossel Bay for embracing the event and welcoming the athletes and visitors. Showing support makes a great difference in the quality of the event and the athletes' experience," says Werner Smit, Project Coordinator.

IRONMAN 70.3 returns to Mossel Bay on Sunday, 19 November 2023.

Compiled here, is noteworthy information.

TAKE NOTE OF THE GRAPHICS INCLUDED DETAILING ROAD CLOSURES.

1. What are the event stages?

- 1.9 km swim (Santos to De Bakke)
- 90 km bike course (De Bakke to Herbertsdale – impacting Louis Fourie Road, the N2 direction Cape Town and the R327. **(See graphic included)**)
- 21.1 km run course (De Bakke to the Point – impacting central Mossel Bay. **(See graphic included)**).

2. What are the main event time slots?

- Pro men swim start: 06:30
- Pro women start at 06:35
- Age group athletes start at 06:45 in a rolling format (10 people start in 10 second intervals from 06:45 to 07:20)
- Transition 1 (swim to bike) will have athletes between 06:55 and 08:30
- The bike course will have athletes between 06:55 and 13:00
- Transition 2 (bike to run) will have athletes between 09:00 and 13:00
- The run course will have athletes between 09:00 and 15:55

3. When are the first athletes expected?

- First out of the water at 06:55
- First off the bike course at 09:05
- First finisher after the run at 10:20

TAKE NOTE: RACE ENDS AT SANTOS BEACH AT APPROXIMATELY 16:00

4. Where are the viewing hot spots?

- Santos Beach (swim start and finish)
- De Bakke Beach (transition and swim exit)
- Recreational harbour (run course)
- Bland Street and Station Street to Beach Road (run course)
- The Point (run course)

5. What time will traffic flow in affected areas return to normal?

- Bike course:
 - R327 – 12:30 (re-opened)
 - Louis Fourie – 12:45 (re-opened)
 - Bakke/Marsh Street – 13:30 (re-opened)

TAKE NOTE: On Louis Fourie Road, outer lanes will be allocated to traffic and inner lanes to cyclists. Cross over points have been allocated and will be manned – **see graphics**. N2 – direction Cape Town, will have a stop and go at the turn off to the R327 – **see graphics**. R327 – closed off until 12:30 – **see graphics**.

- Run course:
 - George Road – 04:00 to 16:30
 - Bland Street – 04:00 to 16:30

TAKE NOTE: For access points, see graphics.

6. What happens in case of emergency?

A venue operational centre will be activated during the event where municipal and provincial traffic, South African Police Service, as well as disaster management will be presented to coordinate responses pertaining to emergencies.

Contact the VOC at 079 266 6263.

**SUNDAY
19 NOV
2023**



ROAD CLOSURE:

Everything you need to know about RACE DAY!



AFFECTED ROADS AROUND MOSSEL BAY:

Motorists are urged to be patient and allow extra travelling time.

R327 (between the N2 intersection and Peach Grove intersection 5km before to Herbertsdale)

- **Closed completely from 06:30 - 12:30.**
- Alternative routes: Via Albertinia/Kleinberg in the west OR Brandwacht/ Hartbeeskuldiam in the east.

N2 (between Louis Fourie Rd and R327 intersection)

- **Lane restriction from 06:30 - 12:30.**
- This 3km portion of N2 in both directions will be reduced to a 60km/h zone.
- The inner lane will be reserved for athletes cycling.
- The outer lanes will be open to vehicular traffic.
- The N2 east bound lane will encounter a stop and go at the R327 intersection controlled by traffic officials allowing cyclists crossings.

Louis Fourie Drive (between Marsh Street and N2)

- **Lane restrictions from 05:00 - 14:00.**
- This portion of Louis Fourie will be reduced to a 60km/h zone.
- The inner lane will be reserved for athletes cycling.
- The outer lanes will be open to vehicular traffic.

THE ONLY CROSS OVER POINTS ON LOUIS FOURIE ROAD ARE:

TAKE NOTE: These points will be manned by traffic officials who will control crossing over.

- Marsh Street bridge
- Intersection at Schoeman/ Da Gama Street
- Intersection at Melkhout/ Mossel Street
- Intersection at Essenhout/ Grunter Street
- Intersection at Mayixhole/ Spekboom Street
- Flora Road

NOTE: Crox Street will be **CLOSED**.

PLEASE NOTE:

- Noise control exemption has been obtained at key event venues.
- **No public swimming or surfing** is allowed at Santos Beach to De Bakke Beach or inbetween, from sunrise to 09:00. The event swim, course setup and course breakdown takes place during this timeframe.

SUNDAY
19 NOV
2023



AFFECTED ROADS AND STREETS IN MOSSEL BAY:

Louis Fourie Drive (between Bakke Street and Marsh Street):

- **Completely closed off from 06:00 - 13:30.**
- Alternative route: Use detour between Bakke Street, Fairview and Marsh Street, Da Nova and Eliland Street, Alhof Drive and Da Gama Street. (Detour passes Ridgeway Primary School and Da Nova SuperSpa). An alternative option is to use the N2 between Voorbaai/Hartenbos and Central/Heiderand/ KwaNongqaba/ Dana Bay.

George Road

- **Affected from 04:00 - 16:30.**
- Closed between Louis Fourie Road and Rudie Barnard Street: Residents of De Bakke can use 6th Avenue / Marsh Street as an access point.
- Between Church Street and Rudie Barnard Street lane restrictions will apply. The westbound lane is open to traffic from Church Street up to Rudie Barnard Street.
- Church Street is a crossover point for vehicular traffic to the harbour, Dias Museum, Protea Hotel and the Checkers Centre.

Bland Street

- **Affected from 04:00 - 16:30.**
- Between Church Street and Beach Street: Beach Street is a crossover point for traffic to the Port of Mossel Bay, Gate 3. Use Daley and Kloof to access Gate 3 into Harbour. Residents of Daley Street, Huckle Street and Bedcon Point must use Beach Street as access point to Mossel Bay Central Business District.
- Between Point Street and Kloof Street: Lane restrictions will apply. The westbound lane is open for traffic from Point Road up to Beach Street. Residents of Point Village may only turn right out of Wallace Road towards Mossel Bay Central Business District.

Munro Street

- **Affected from 04:00 - 16:30.**
- Closed between George Road and the Dias Museum lower gate: One lane reserved for residents to exit via the Port Road of Mossel Bay between 04:00 and 08:45. Vehicles will only be able to return after 16:30.
- Patrons to Santos Beach, Santos Express and Jackal on the Beach can park off site and walk via Munro Beach. Use Church Street to cross over George Road.

Station Street

- **Affected from 04:00 - 16:30.**
- Between Church Street to cross over George Road: Use Church Street to cross over George Road.

Coastal walkway

- **Affected from 08:00 - 16:30.**
- From Kloof Street to Point Road: Athletes will be running on the coastal walkway towards the Point.

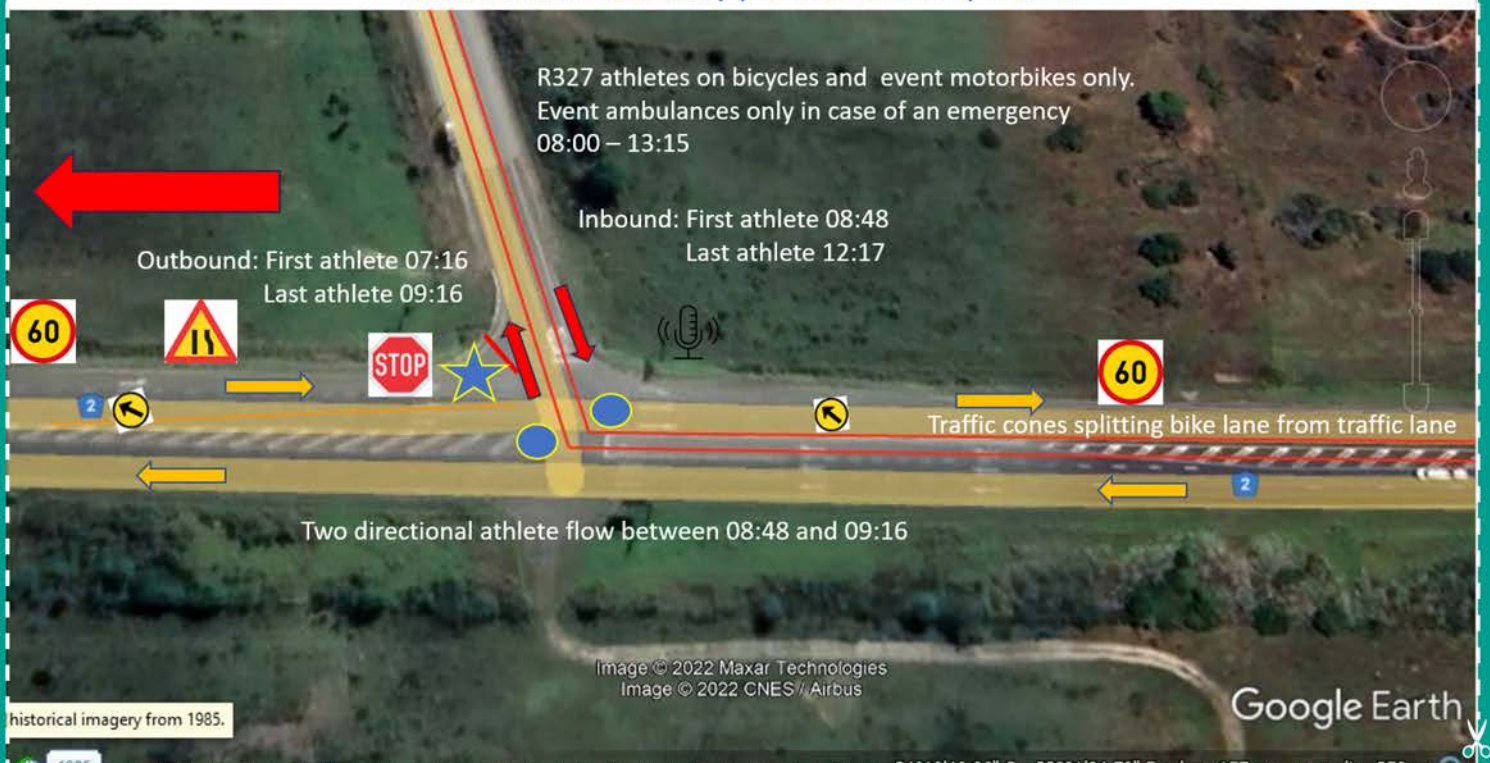
RACE DAY NUMBER FOR PUBLIC USE - 079 266 6263

RACE DAY : BIKE COURSE



CUT OUT AND KEEP AS REFERENCE

IRONMAN 70.3 Mossel Bay | Traffic Plan 2023 | Slide 15

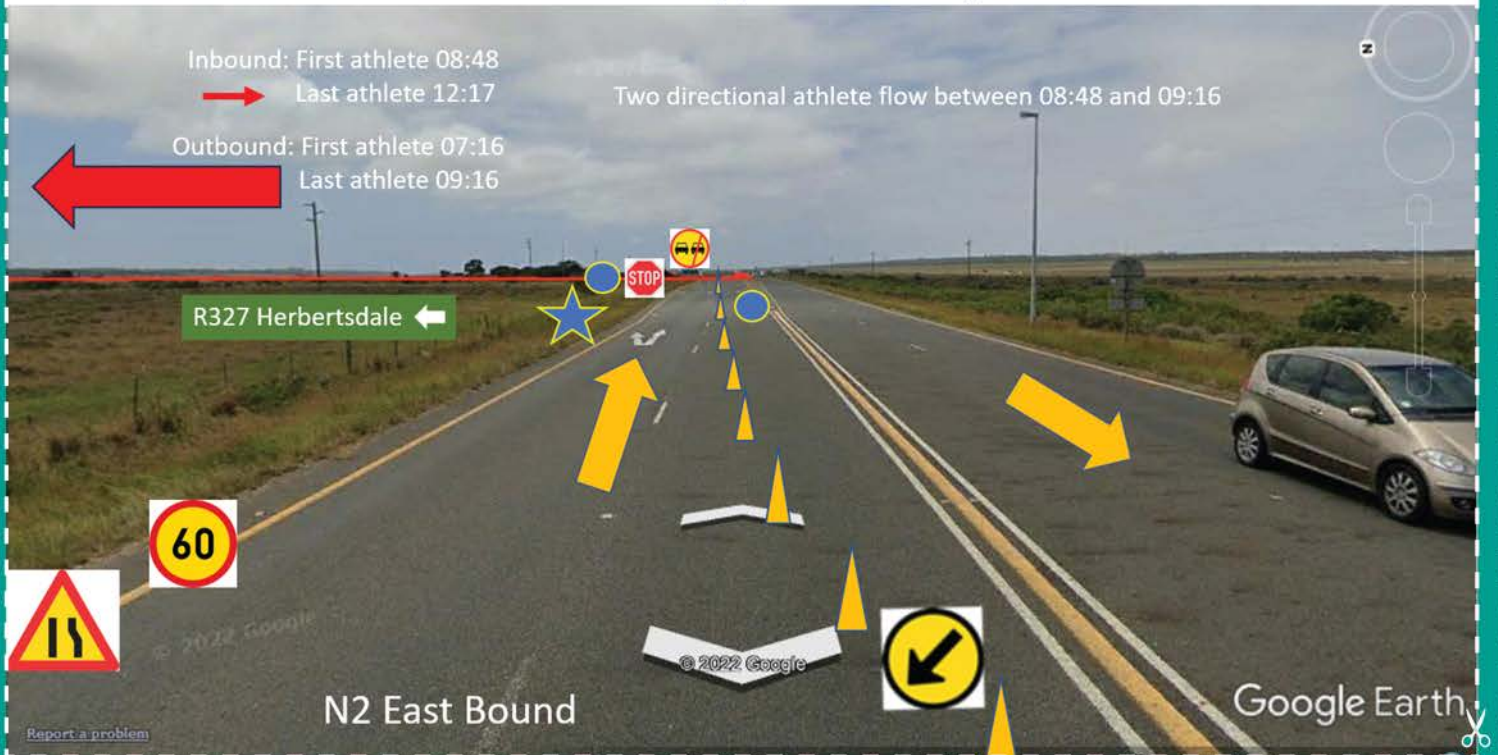


CUT OUT AND KEEP AS REFERENCE

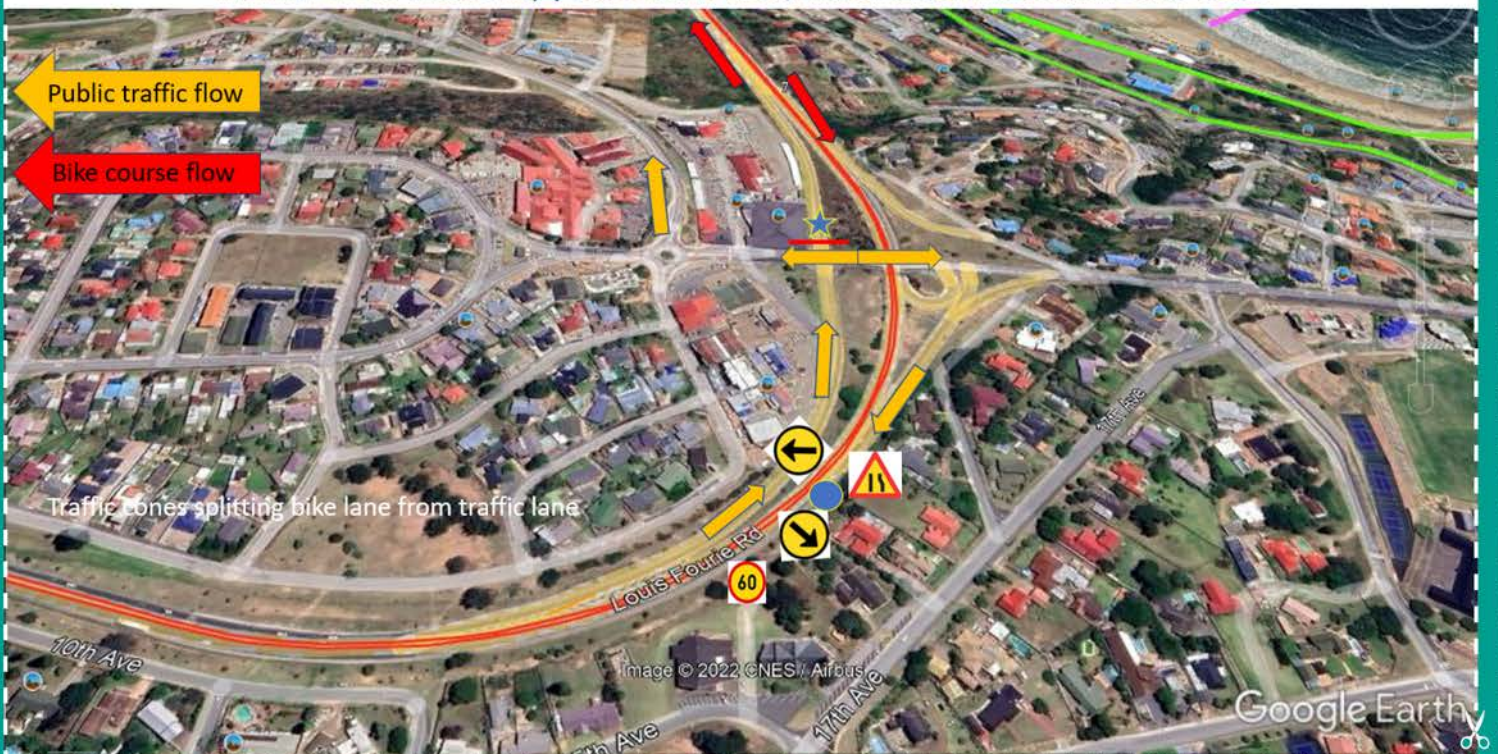
CUT OUT AND KEEP AS REFERENCE

RACE DAY : BIKE COURSE

IRONMAN 70.3 Mossel Bay | Traffic Plan 2023 | Slide 16



IRONMAN 70.3 Mossel Bay | Louis Fourie Road/ Marsh Street intersection 06:15-13:30



RACE DAY : RUN COURSE

ISUZU
IRONMAN
70.3 MOSSEL BAY
SOUTH AFRICA
AFRICAN TRICLUB CHAMPIONSHIP

IRONMAN 70.3 Mossel Bay | Bakke Street/ Louis Fourie intersection 06:15-13:30



CUT OUT AND KEEP AS REFERENCE



CUT OUT AND KEEP AS REFERENCE

CUT OUT AND KEEP AS REFERENCE



RACE DAY : RUN COURSE



CUT OUT AND KEEP AS REFERENCE



CUT OUT AND KEEP AS REFERENCE

CUT OUT AND KEEP AS REFERENCE

